

## How to Manually Set Up Powerful WiFi VPN Hotspot?

The following instructions will allow you to turn your device into a [Wi-Fi VPN](#) hotspot that supports L2TP, SSTP and PPTP protocols. However, it can also be used to share OpenVPN. In order to setup a Wi-Fi VPN hotspot, here is what you need to do:

### Things to Consider:

Before you begin, please make sure that:

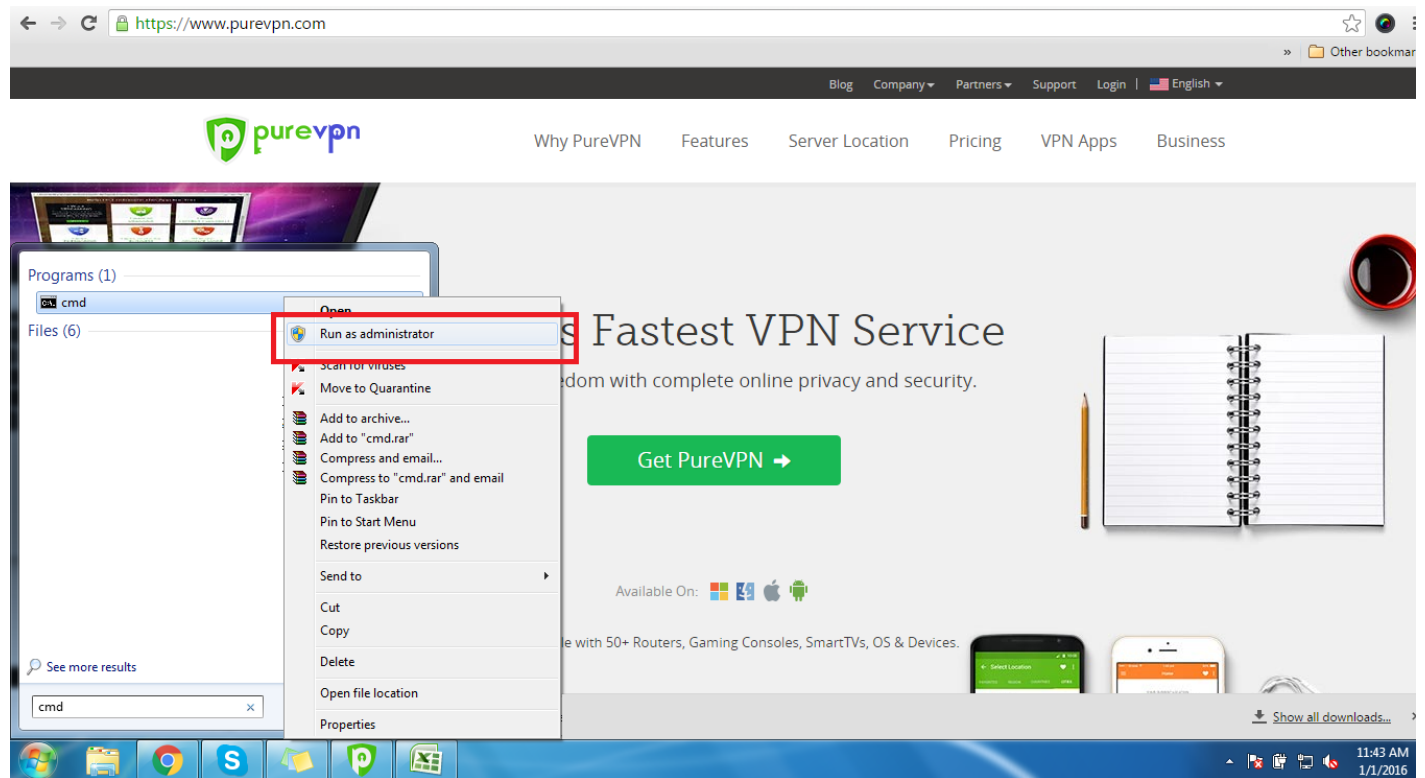
- You have a working internet connection
- Windows Supported Device.
- A Premium PureVPN account (if you haven't bought it yet, [click here](#) to buy)

Use this tutorial to turn your Windows computer into a strong WiFi VPN hotspot that supports PPTP, SSTP, L2TP protocols. It can also be used to share OpenVPN if you desire. It is ideal for old laptops that aren't in use any longer. This would be helpful in connecting with many devices. For instance Roku, Wii, PS3 etc.

1 Connect your computer using Ethernet cable and ensure your internet is working.

2 Go to Start and type *cmd* in the search box.

3 Right click *cmd* and choose Run as Administrator. If asked for password, provide the admin password to continue.

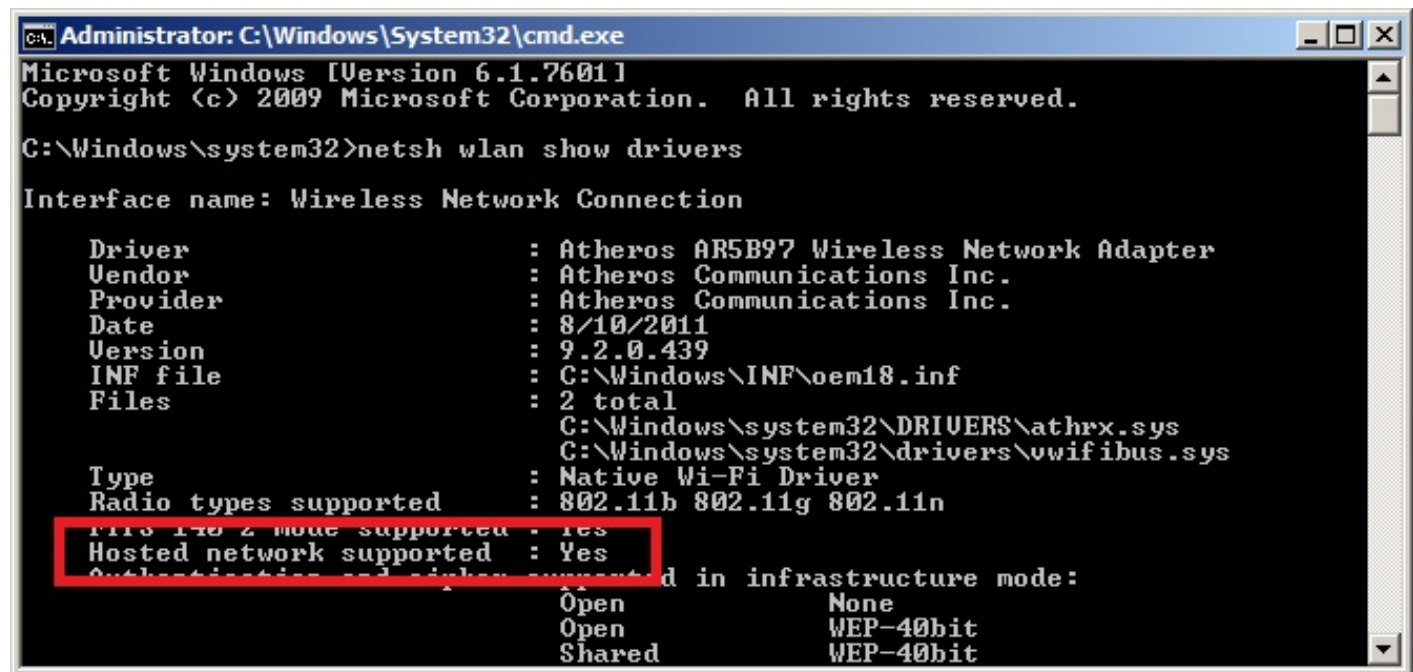


4 On Command Prompt, type ***netsh wlan show drivers*** Press Enter.

```
C:\Windows\System32\cmd.exe
Microsoft Windows [Version 6.1.7601]
Copyright (c) 2009 Microsoft Corporation. All rights reserved.

C:\Windows\system32>netsh wlan show drivers
```

5 Upon seeing the following result, you will have to check whether Yes is written next to Hosted Network Supported or not. If it is Yes then you are good to go.



```
C:\Windows\system32>netsh wlan show drivers

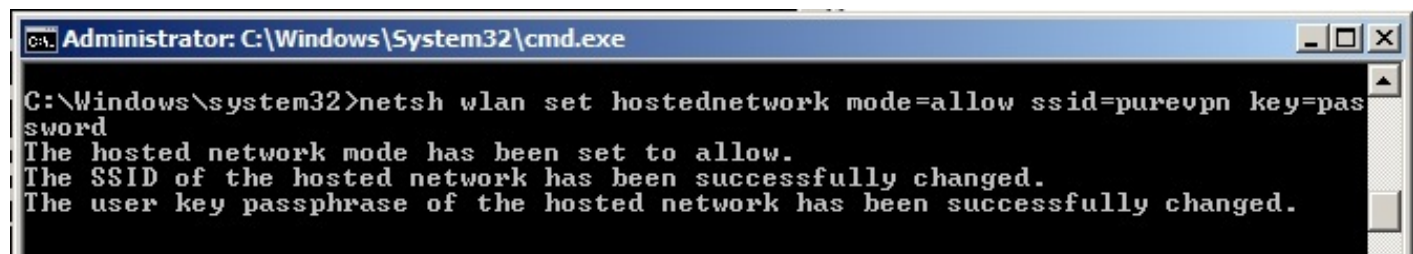
Interface name: Wireless Network Connection

Driver               : Atheros AR5B97 Wireless Network Adapter
Vendor               : Atheros Communications Inc.
Provider             : Atheros Communications Inc.
Date                 : 8/10/2011
Version              : 9.2.0.439
INF file              : C:\Windows\INF\oem18.inf
Files                 : 2 total
                       C:\Windows\system32\DRIVERS\athrx.sys
                       C:\Windows\system32\drivers\vwifibus.sys
Type                  : Native Wi-Fi Driver
Radio types supported : 802.11b 802.11g 802.11n
11n 11g 2 mode supported : Yes
Hosted network supported : Yes
Authentication and cipher supported in infrastructure mode:
Open                  : None
Open                  : WEP-40bit
Shared                : WEP-40bit
```

6 Now type ***netsh wlan set hostednetwork mode=allow ssid=purevpn key=password*** and hit enter key. This will establish WiFi Network. You may choose a password of your choice. Follow this as a reference:

ssid= Wifi connection name

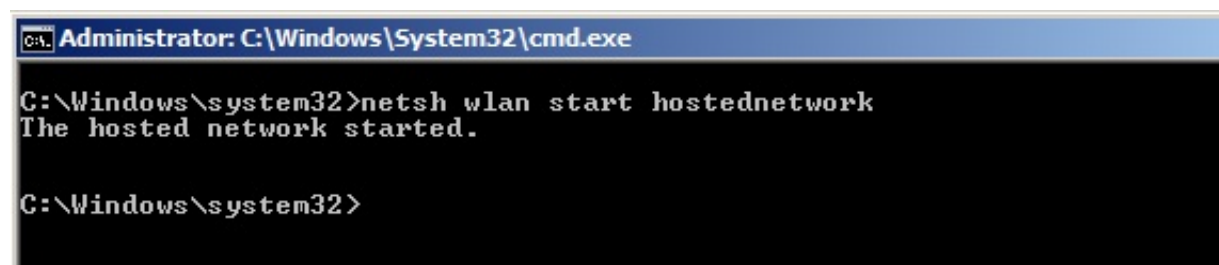
key= your desired password



```
C:\Windows\system32>netsh wlan set hostednetwork mode=allow ssid=purevpn key=password

The hosted network mode has been set to allow.
The SSID of the hosted network has been successfully changed.
The user key passphrase of the hosted network has been successfully changed.
```

7 Type ***netsh wlan start hostednetwork*** and start WiFi network.



```
C:\Windows\system32>netsh wlan start hostednetwork

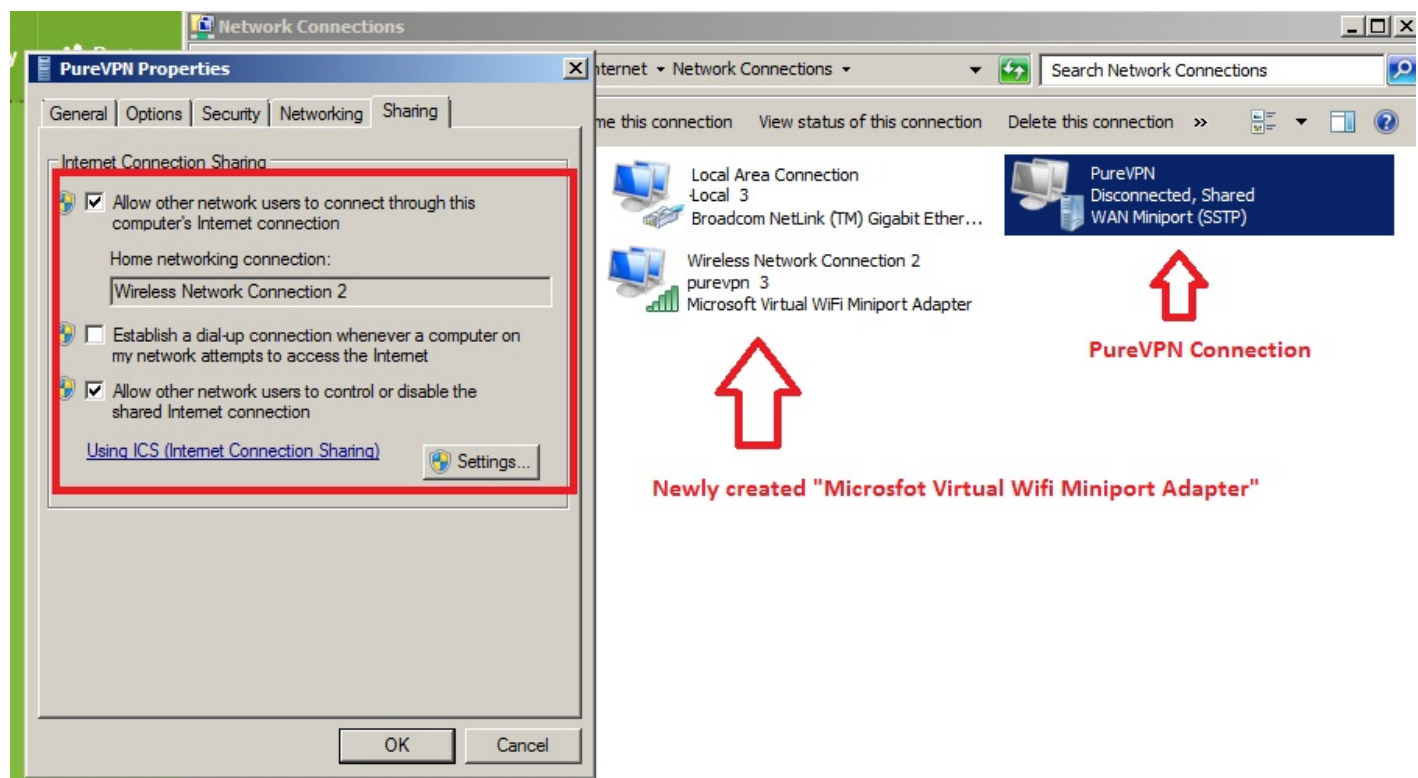
The hosted network started.

C:\Windows\system32>
```

If you get error “**The hosted network couldn’t be started.**” then go to your Network and sharing center and enable newly created “**Microsfot Virtual Wifi Miniport Adapter**” then try again. This should resolve your issue.

Windows 10 users, kindly ignore this step and move to next one

Now right click on PureVPN Icon go to properties > Click on Sharing tab > Select “**Allow Other Network User to connect through this computer’s Internet connection**”, select your newly created “**Microsfot Virtual Wifi Miniport Adapter (Wirless network connection)**” from drop down menu and select “**Allow other network users to control or disable the shared Internet connection**”. Hit Ok and you are done.

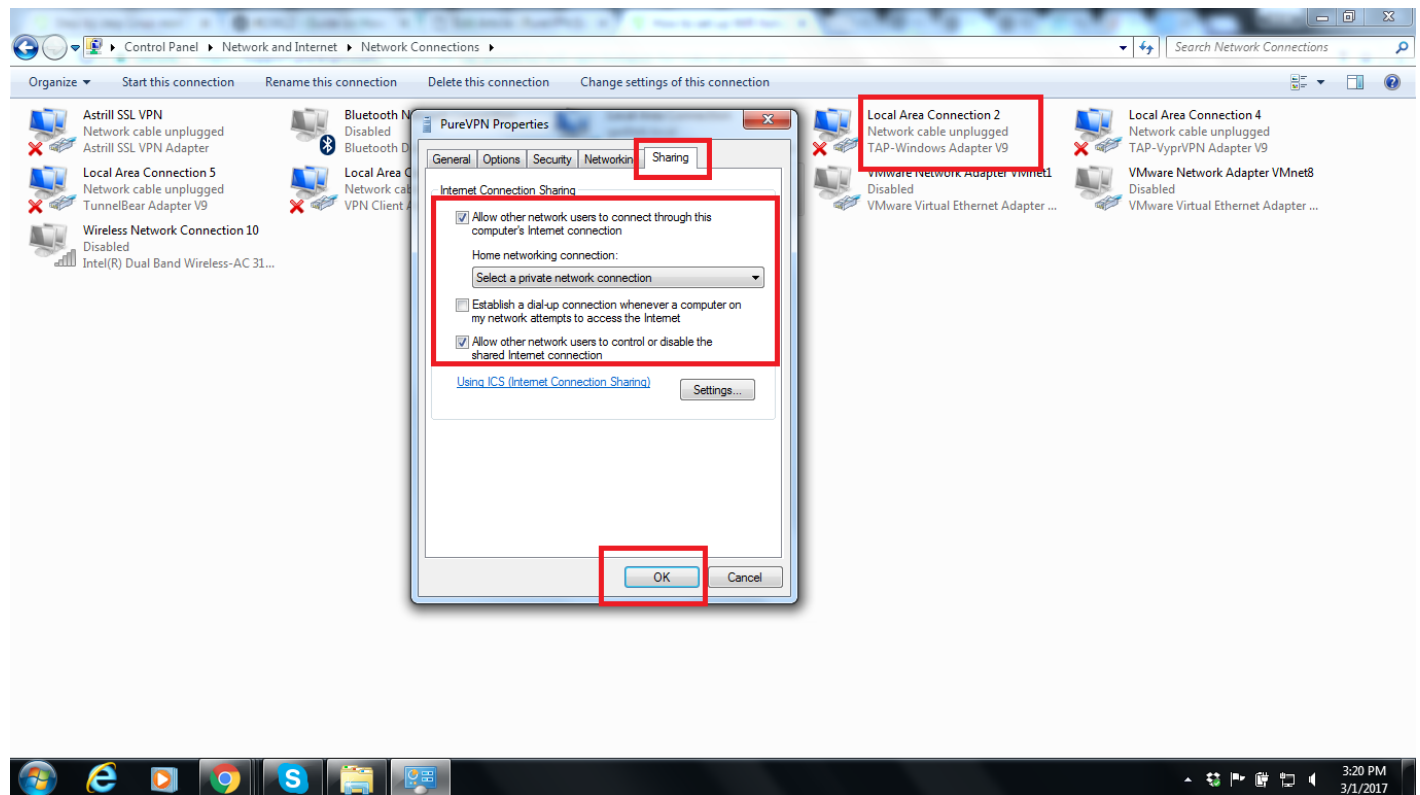


Now connect with PureVPN.

If you do not know how to connect with PureVPN then please follow [this guide](#)

**For WINDOWS 10 Users:**

Now right click on 'TAP Windows Adapter V9' then go to properties > Click on Sharing tab > Select **"Allow Other Network User to connect through this computer's Internet connection"**, select your newly created **"Microsfot Virtual Wifi Miniport Adapter (Wirless network connection)"** from drop down menu and select **"Allow other network users to control or disable the shared Internet connection"**. Hit Ok and you are done.



Now connect with PureVPN (Make sure to connect with with either TCP or UDP protocol)

If you do not know how to connect with PureVPN then please follow [this guide](#)

Now you can connect any device to your newly created **PureVPN Wifi hotspot** and **ENJOY!!!!!!!!!!!!**

If you're an advanced user and looking for extra security, we would recommend you to "Activate Internet Kill Switch" in PureVPN software before connecting to VPN.

How to Activate Internet Kill Switch

If you're using latest PureVPN software then please refer to this [guide](#). However, if you're using an older version of PureVPN then please refer to this [guide](#).

Please use the **comment box** for your suggestions & feedback. For additional help, please submit [support ticket](#) with errors and screen shots (if possible) or contact our 24/7 live chat.